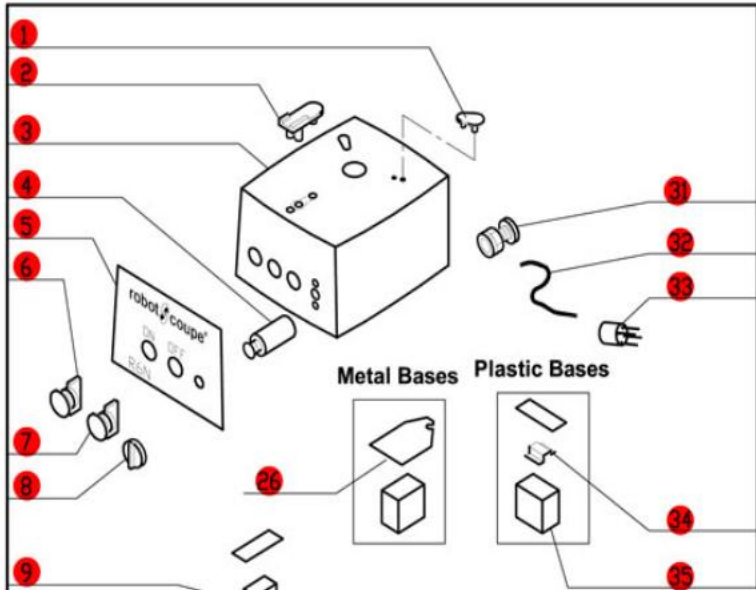
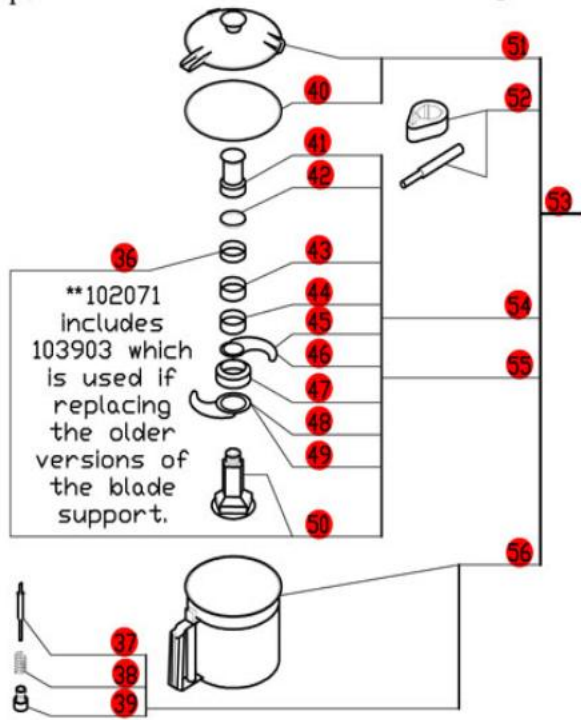


# R6B Series D

Series D, Serial Numbers 235xxxxx13  
 2-Speed, 208-240 Volt, 3 Phase, 60Hz., 1 HP.  
 Low Speed-850 RPM, 2.6 Amps  
 High Speed-1725 RPM, 2.8 Amps  
 Use **Series-D** Plates.



**Metal Bases**      **Plastic Bases**



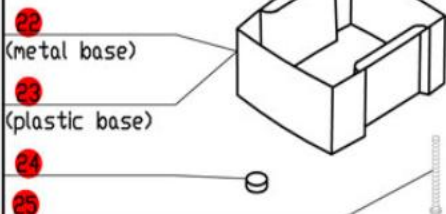
\*\*102071 includes 103903 which is used if replacing the older versions of the blade support.



**Click on Red Dot  
 OR  
 Call us  
 800-465-6060**

\* RA604D old style motor is no longer available.  
 Order S193379, 29620, R611, 117770, and four BX658 screws.

(Do not order RA494 baffle if you have a plastic base)



ACCESSORIES

